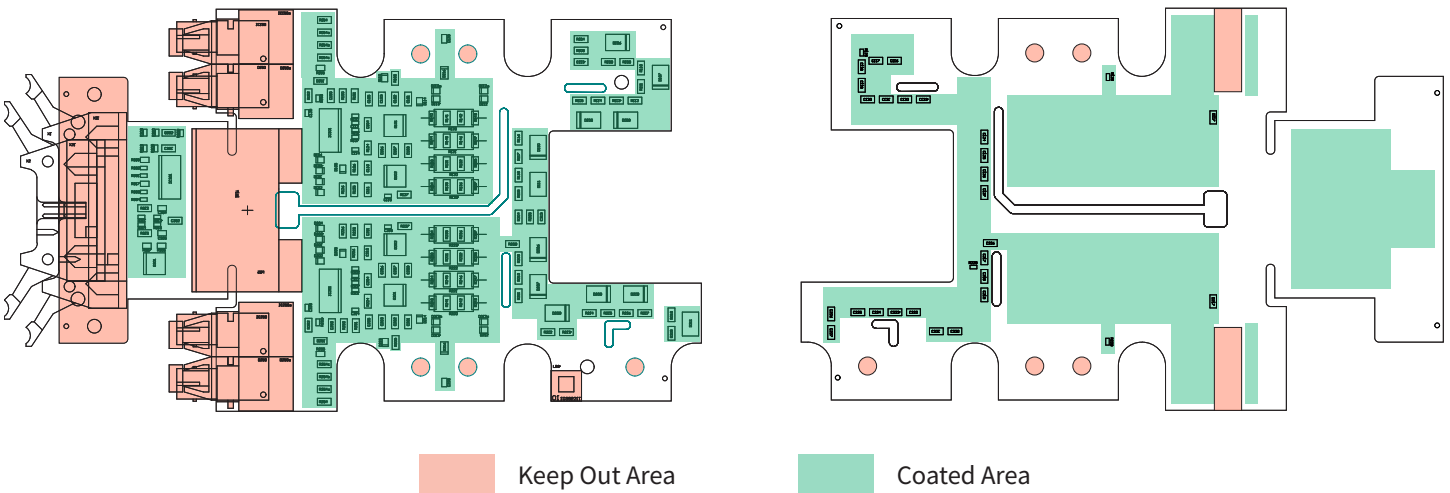


Conformal Coating for Gate Drivers

- Reduce total cost of ownership and streamline production
- Testing in accordance with IEC 60068-2 standards
- Controlled process, 100% automatic optical inspection at end-of-line
- Extended warranty available with conformal coating

In-Line Conformal Coating Enhances Reliability and Protection

Typical Coated and Keep Out Areas (2SP0320V2Ax-xxxx)

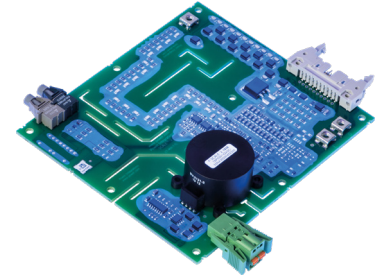


Applications

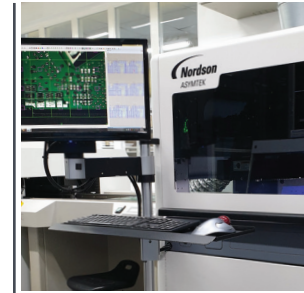
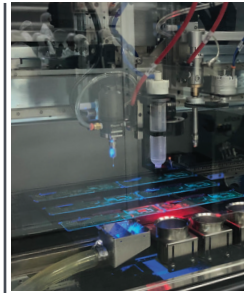
- Offshore and onshore wind parks
- Railway main and auxiliary inverters
- High-voltage DC transmission systems (HVDC)
- Photovoltaic inverters
- Medium-voltage drives in mining and oil and gas industry

Qualification

- Qualification is based on tests in accordance with IEC 60068-2-xx
 - Vibration (sinusoidal) test parameters according to IEC 60068-2-6:2008-10
 - Shock test parameters according to IEC 60068-2-27:2010-02
 - Damp heat, steady-state test parameters according to IEC 60068-2-78:2012-10
 - Cold test parameters according to IEC 60068-2-1:2007-03
 - Dry heat test parameters according to IEC 60068-2-2:2007-07
 - Thermal cycle test parameters according to IEC 60068-2-14:2009-01
 - Salt mist test parameters according to IEC 60068-2-11



Conformal Coating – In-Line Process Flow



Washing

Loading

Double Side
Coating

Drying

AOI

Packing &
Shipping